

CETking

MockEngineering

Program

CET 2011

Solutions

CETking Workshops - Increase your score by 20 marks in CET!

CETking MockEngineering – Increase your score by 20 marks with mock taking strategies..

GDPI Clinic – Get us a call from a Bschoo and we will convert it for you...

www.cetking.com | Mocks | Workshops | GDPI Call Rahul Sir 9820500380 | 9820377380 | 9820337380

{ANSWERS'

1	2	3	4	5	6	7	8	9	10
C	C	A	A	C	A	D	A	D	D
11	12	13	14	15	16	17	18	19	20
0	A	A	C	B	D	E	D	C	A
21	22	23	24	25	26	27	28	29	30
E	D	E	B	C	D	B	A	C	B
31	32	33	34	35	36	37	38	39	40
A	A	D	B	A	B	E	E	A	D
41	42	43	44	45	46	47	48	49	50
E	B	E	D	A	D	C	E	D	C
51	52	53	54	55	56	57	58	59	60
D	C	B	A	D	D	C	A	B	E
61	62	63	64	65	66	67	68	69	70
D	E	D	C	B	B	E	A	D	E
71	72	73	74	75	76	77	78	79	80
C	D	C	D	A	E	C	B	B	E
81	82	83	84	85	86	87	88	89	90
E	D	D	A	C	B	D	B	A	C
91	92	93	94	95	96	97	98	99	100
E	D	E	C	B	D	E	C	A	E
101	102	103	104	105	106	107	108	109	110
E	D	C	B	D	A	C	B	B	C
111	112	113	114	115	116	117	118	119	120
D	D	A	D	A	E	C	A	0	C
121	122	123	124	125	126	127	128	129	130
E	E	D	A	A	E	C	C	A	B
131	132	133	134	135	136	137	138	139	140
B	D	A	B	E	A	E	D	D	B
141	142	143	144	145	146	147	148	149	150
C	A	D	D	C	E	B	B	A	E
151	152	153	154	155	156	157	158	159	160
B	C	A	A	A	D	A	C	E	E
161	162	163	164	165	166	167	168	169	170
B	E	C	A	D	C	E	D	A	A
171	172	173	174	175	176	177	178	179	180
B	B;	A	A	E	A	A	D	E	C
181	182	183	184	185	186	187	188	189	190
C	A	C	B	C	C	E	A	B	E
191	192	193	194	195	196	197	198	199	200
A	E	B	A	C	E	A	D	B	A

CETking Workshops - Increase your score by 20 marks in CET!

CETking MockEngineering – Increase your score by 20 marks with mock taking strategies..

GDPI Clinic – Get us a call from a Bschool and we will convert it for you...

www.cetking.com | Mocks | Workshops | GDPI Call Rahul Sir 9820500380 | 9820377380 | 9820337380

1. D = 4; F = 6; H = 8; J = 10; $\boxed{L=12}$

2. $\underbrace{3F \quad 6G \quad 11I \quad 18L}_{27P}$

3. $\begin{matrix} +6 & +5 & +4 & +3 & +2 \\ A & G & L & P & S & U \end{matrix}$

4. $\underbrace{AI \quad BJ \quad CK \quad DL}$

5. $6 \xrightarrow{+5} 11 \xrightarrow{+10} 21 \xrightarrow{+15} 36 \xrightarrow{+20} 56 \xrightarrow{+25} \boxed{81}$

6. $1 \xrightarrow{+8} 9 \xrightarrow{+8} 17 \xrightarrow{+16} 33 \xrightarrow{+16} 49 \xrightarrow{+24} 73 \xrightarrow{+24} \boxed{97}$

7. $\underbrace{2A \ 11 \quad 4D \ 13 \quad 12G \ 17}_{48J \ 23}$

8. $4 \xrightarrow{+10} 40 \xrightarrow{-6} 34 \xrightarrow{-8} \boxed{26} \xrightarrow{-10} 16 \xrightarrow{-12} 4$

9.

10	30	68	130	222	350
2^3+2	3^3+3	4^3+4	5^3+5	6^3+6	7^3+7
12	a	b	c	d	e
2^3+2^2	3^3+3^2	4^3+4^2	5^3+5^2	6^3+6^2	7^3+7^2
36	80	$\boxed{150}$	252	392.	

18. In the word 'ALARMING' we treat the vowels A, I as one letter. Thus we have LRMNG(A A i). Now we have to arrange 6 letters in = 6! Ways. Now AAI has 3 letters in which A occurs 2 times and rest is different.

∴ No. of ways arranging these letters = $3!/2!$
 ∴ Total number of ways = $6! \times 3!/2!$

20. Length of largest tile = H.C.f of 624 and 480 cm = 48
 ∴ Area of each tile = $48 \times 48 \text{ cm}^2$
 ∴ Number of tiles = $624 \times 480 / 48 \times 48 = 130$.

34. $(8/15)^2 = 0.284$ $(8/15)^{1/2} = 0.730$
 Hence, Quantity B > Quantity A.

35. $(-9)^6 = 9^6$ $(-9)^5 = (-9^5)$
 Hence, Quantity A > Quantity B.

36. From formula,
 $(y + Z)^2 = y^2 + z^2 + 2yz$
 $= 52 + 48 = 100$
 ∴ $y + z = 10$... (i)
 again, $(y - Z)^2 = y^2 + Z^2 - 2yz$

$$= 52 - 48 = 4$$

.. $y - z = 2$... (ii)

Now, from (i) and (ii)

$$Y + z = 10$$

$$y - z = 12$$

$$2y = 12$$

.. $y = 6$

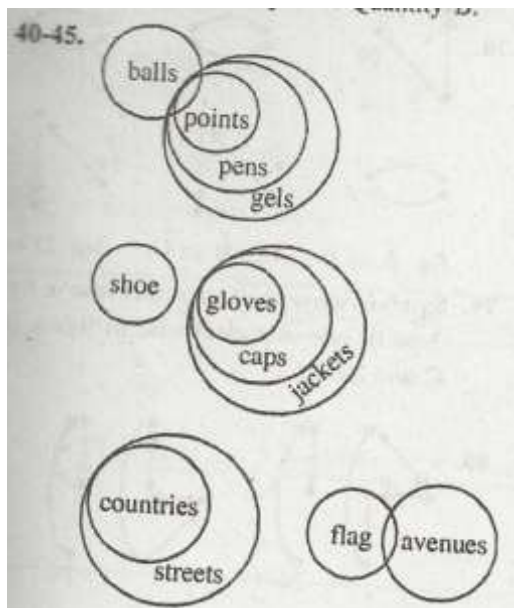
.. $x = 4$

$y^2 + 2yz + z^2 = 36 + 48 + 16 = 98$ $(y + z)^2 = 10^2 = 100$
Hence, Quantity B > Quantity A.

37. Putting the value of y,
 $x = 3 \times (-3) + 3 = -9 + 3 = -6$
Hence, Quantity A = Quantity B.

38. $2x + 4y > 10$
 $\Rightarrow 2(2x + 4y) > 10 \times 2$
 $\Rightarrow 4x + 8y > 20$
Hence, the relationship cannot be established from the information

39. $6/10 = 0.06$ $0.036/6 = 0.006$
Hence, Quantity A > Quantity B.



58. Given that $6A = 4B = 8C$
 $\Rightarrow 6A = 4B$
 $\Rightarrow B = 3/2A$
 And $C = 6/8A = 3/4A$
 Now $A+B+C = 1950$
 $A + 3/2A + 3/4A = 1950$
 $4A + 6A + 3A / 4 = 1950$
 $A = 1950 \times 4 / 13$
 $= 150 \times 4 = \text{Rs.}600$

CETking Workshops - Increase your score by 20 marks in CET!

CETking MockEngineering – Increase your score by 20 marks with mock taking strategies..

GDPI Clinic – Get us a call from a Bschool and we will convert it for you...

www.cetking.com | Mocks | Workshops | GDPI Call Rahul Sir 9820500380 | 9820377380 | 9820337380

60. Let first part = Rs.x
 Second part = Rs.(9600 - x)
 A/Q, $X \times 5 \times 1 / 100 = (9600 - x) \times 3 \times 1 / 100$
 $8x = 9600 \times 3$
 $X = 3600$
 \therefore S.I on first = $3600 \times 5 \times 1 / 100 = 180$
 Total income = $180 + 180 = \text{Rs.}360.$

63. Circumference of the circle = $2 \times 22/7 \times 28 = 176\text{m}$
 Distance = 176m
 Time = 44 m/s.
 Speed = $176/44 = 4 \text{ m/s.}$
 Now, perimeter of hexagon = $48 \times 6 \text{ m}$ Speed=4 m/s
 Speed= 4 m/s
 Time= $48 \times 6 / 4 = 72 \text{ sec.}$

64. Let radius of the circle = x
 then area of the circle = x^2
 A/Q, Radius of new circle
 = $X(1 + 20/100) = 6/5x$
 Area of new circle = $36x^2/25$
 Area Increased = $36x^2/25 - x^2 = 11x^2/25$
 \therefore Increased % = $11x^2/25 / x^2 \times 100 = 44\%$

66. Let present age of Arti = x years.
 \therefore 5 years ago Arti's age = (x - 5) years.
 A/Q, 5 years ago Bina's age = $3(x - 5)$ years.
 Now, present age of Chitra = C
 \therefore 10 years ago Chitra's age = C - 10
 10 years ago Bina's age = C - 10/2
 \therefore 5 years ago Bina's age = C - 10/2 + 5
 $= C/2$
 $3(x - 5) = C/2$
 $x - 5 = C/6$
 $x = C/6 + 5$

67. Letters/symbols of upper left and lower right inter-change. Rest upper letters/ symbols turn clock wise while rest lower letters/symbols turn anticlockwise. The similar change will take place from figure C to D.

68. From figure B to A. ~ Upper two sectors move to lower part without changing the side. Lower left sector goes to upper right side while lower right sector changes its design and moves to upper left side. The some changes will occur in figure D to C.

69. From figure A to B ~ Symbol of bottom moves to top and rest two symbols slides downward. Top symbol thus anticlockwise, middle symbol turns clockwise. Which the symbol of bottom gets opposite. The same changes will occur in figure C to D.

CETking Workshops - Increase your score by 20 marks in CET!

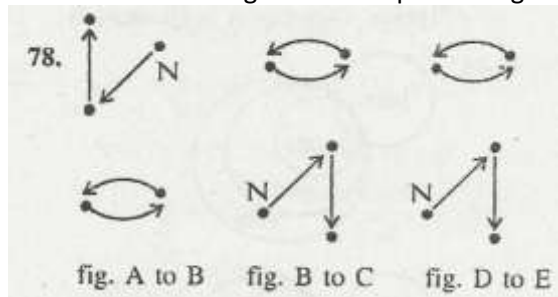
CETking MockEngineering – Increase your score by 20 marks with mock taking strategies..

GDPI Clinic – Get us a call from a Bschool and we will convert it for you...

www.cetking.com | Mocks | Workshops | GDPI Call Rahul Sir 9820500380 | 9820377380 | 9820337380

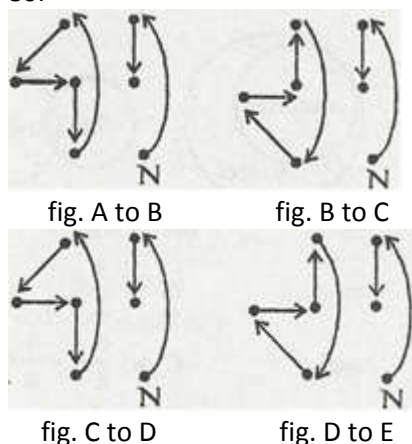
70. From figure B to A. ~ All the symbols revolve clockwise. Left symbol rotates at 135° clockwise, lower symbol rotates at 135° anticlockwise, right symbol rotates 90° clockwise while the upper symbol rotates 180°. The same changes will occur in figure D to C.

71. From figure B to A. ~ 'U' moves to centre, rest three symbols of the corners revolve clockwise by one step while E fills the vacant place. Block of right side moves to left and get single line. The same changes will take place in figure D to C.



79. Symbols moves half step clockwise in figure A to B, one step clockwise in figure B to C and so on.

80.



Note: 'N' refers to new symbol.

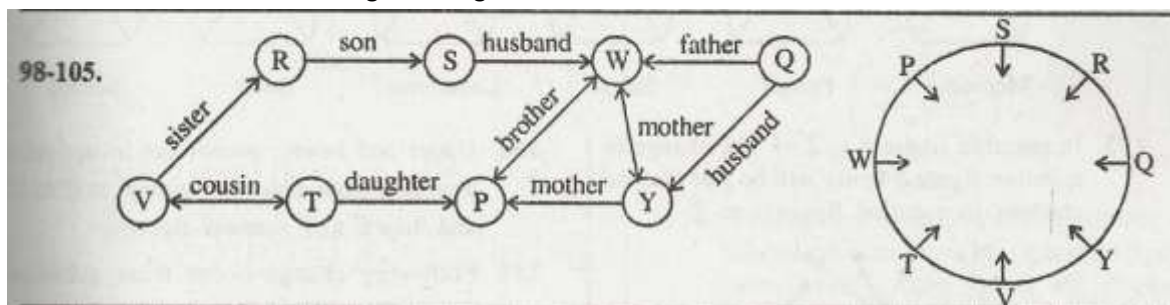
81. The arrow tagged design rotates 135° anticlockwise, 45° clockwise, 135° anticlockwise and 45° clockwise respectively. The square tagged design rotates 45° clockwise, 135° anticlockwise, 45° clockwise and 135° anticlockwise respectively. 'T' and 'O' interchange its place alternatively when its interchange its place a new letter comes in the lower part.

82. In figure A, C and E the number of stars decreases by A. Abo in figure Band D the number of stars decreases by A. Lower design of line segment moves to the upper end and a new design appears at the lower end.

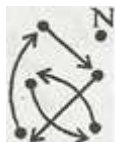
93. The amount spent by C = 4.25
The amount spent by A and B together = 0.75
∴ The amount spent by C more = 3.50
∴ Required per cent = $3.50 / .75 \times 100 = 466$

94. Required ratio = $2.75 + 3 / 1.50 + 2 = 5.75 / 3.50 = 23 / 14$
= 23:14

95. Required average = $\frac{0.50 + 0.25 + 1.25 + 1.50 + 2.25 + 2.75 + 3.25 + 3.75}{8}$
 $= \frac{15.50}{8} = 1.9375 = \1937.5 million.



109. These changes occur in figure A to B. When 'N' refers to new symbol. But answer figure B does not follow the change.



110. Vertical design turns 45° clockwise and horizontal design gets opposite in the next figure. But answer figure C does not follow the changes.

111. Angle like design turns 90° clockwise or anticlockwise from first to second figure. Another design opens towards the inside of the angle. While the answer figure D does not follow the changes.

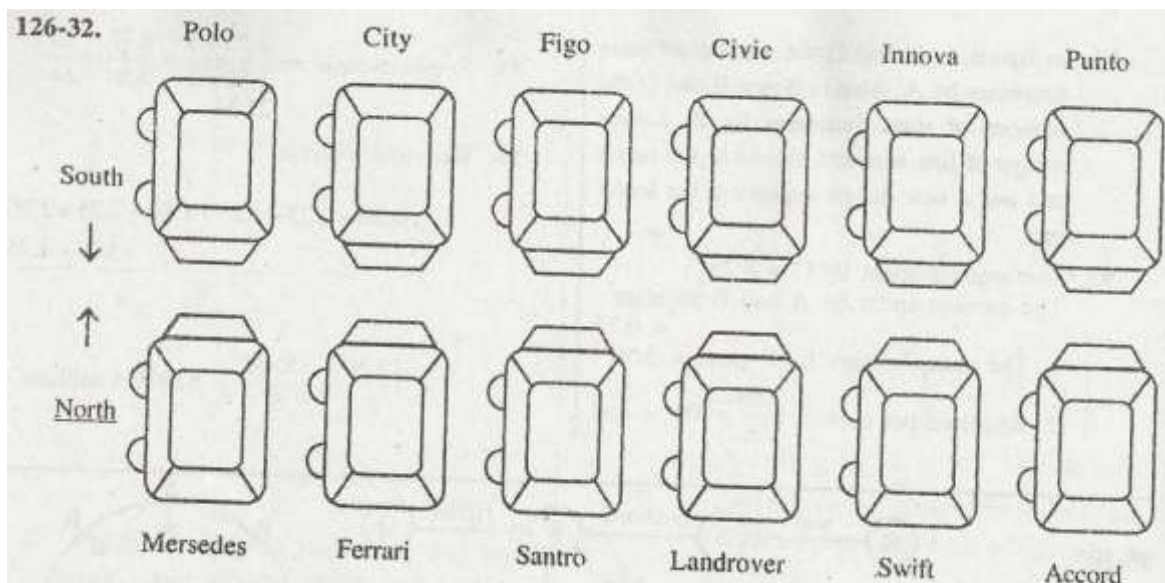
112. Upper and lower designs change their side from left to right and middle design changes its side from upper to lower. But the answer figure 'D' does not follow the rule.

113.

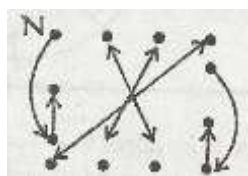


The first letter comes to the forth, the second letter comes to the third. The third letter goes to top while letter. of the bottom goes to the second position. But the answer figure '1' does not follow the change.

118. Marks obtained in Mock 6 = 64
 Full marks = 150
 $\therefore \text{Marks (per cent)} = \frac{64}{150} \times 100$
 $= 42.67.$

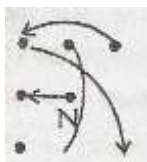


133. In question figure 1 to 2 ~ The change in question figure 5 to six will be just like the changes in question figure 1 to 2



134. The symbol of lower left corner moves to upper right corner. The middle symbol disappears and a new symbol adds at bottom rest the symbols slide downward and the diagonal row gets vertical. In another diagonal row the symbol of lower right corner moves to upper left corner and rest symbols slide downward. Similar change will occur in question figure E to get the next one.

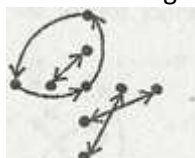
135.



The changes from question figure A to B is above and the some changes will occur in question figure E to get answer figure, Here 'N' refers to new symbol.

136. Upper and lower symbol get in opposite direction from question figure A to C to D and thus E to F (answer figures)

137. Following change occur from question figure A to B and C to D .. The same changes will occur to get next figure.



146-147. Mohit = Abha > Bharat > Kamal < Renuka < Shiela < Mohit

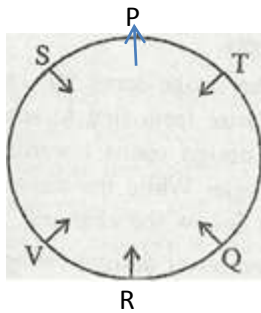
CETking Workshops - Increase your score by 20 marks in CET!

CETking MockEngineering – Increase your score by 20 marks with mock taking strategies..

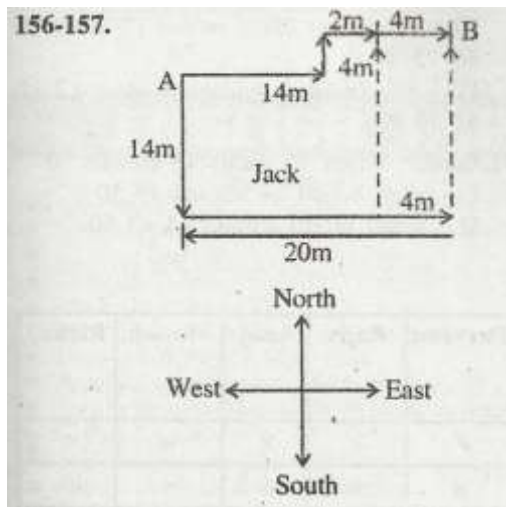
GDPI Clinic – Get us a call from a Bschool and we will convert it for you...

www.cetking.com | Mocks | Workshops | GDPI Call Rahul Sir 9820500380 | 9820377380 | 9820337380

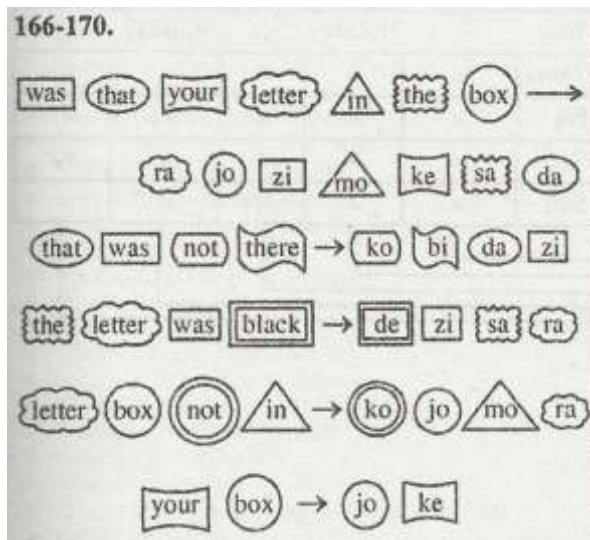
153-155.



156-157.



166-170.



Hence, black = de in = mo
 letter = ra not = ko
 was = zi there = bi
 that = da box = jo

CETking Workshops - Increase your score by 20 marks in CET!

CETking MockEngineering – Increase your score by 20 marks with mock taking strategies..

GDPI Clinic – Get us a call from a Bscool and we will convert it for you...

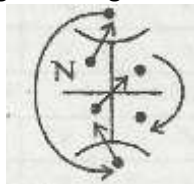
www.cetking.com | Mocks | Workshops | GDPI Call Rahul Sir 9820500380 | 9820377380 | 9820337380

the = sa your = ke

171. Design of corner moves to opposite corner and again returns. Second letter disappears and a new one comes at the place letter of right and comes at left end and all the rest letters slide right ward..

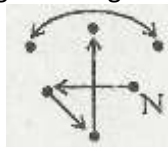
172. The top symbol disappear and the third symbol (from top) moves to top while a new symbol appears at the third place. The second symbol goes to the fourth place and the fifth symbol goes 'to the second place. Same changes occur in question figure A to Band C to E. Hence same changes will occur in question figure five to get answer figure.

173. Changes from question figure A to B is as follows, Here, N refers to new symbol. The same changes will occur in question figure E to get answer figure.



174. Shaded' square like symbol rotates 45° clockwise after every two question figures. AITOW like symbol rotates 45° clockwise while circle like symbol also rotates 45° clockwise.

175. Changes from question figure A to B is as follows. Here N refers to new symbol. The same changes will occur in question figure E to get answer figure.



181-185.

7	Insurance	N	J
6	Vacant	L	K
5	Travel Agency	P	L
4	Library	K	M
3	News paper Office	M	N
2	Bank	O	O
1	Grocery	J	p

186-189. Input:- brown 12 sought 72 dawn 56 atom 84 on 31.

I - sought brown 1272 down 56 atom on 31 84

II - sought on brown 12 dawn 56 atom 31 72 84

CETking Workshops - Increase your score by 20 marks in CET!

CETking MockEngineering – Increase your score by 20 marks with mock taking strategies..

GDPI Clinic – Get us a call from a Bscool and we will convert it for you...

www.cetking.com | Mocks | Workshops | GDPI Call Rahul Sir 9820500380 | 9820377380 | 9820337380

III - sought on dawn brown 12 atom 31 56 72 84
 IV -- sought on dawn brown atom 12 31 56 72 84.

190-191. Input:- bright 14 small 43 abroad 50
 I - small bright 14 abroad 43 50
 II - small bright abroad 14 43 50.

192-195.

Group Pharma- ceuticals	Aashirwad Plastics	Hotel Taj	NGO Tarang	Blue Dart	Days	Parveen	Rajiv	Amit	Manish	Richa
×	×	✓	×	×	Mon	✓	×	×	×	×
×	×	×	×	✓	Tues	×	×	×	×	✓
—	Holiday	—	Holiday	—	Wed	—	Holiday	—	Holiday	—
×	✓	×	×	×	Thurs	×	×	✓	×	×
×	×	×	✓	×	Fri	×	×	×	✓	×
×	×	×	×	×	Sat	×	×	×	×	×
✓	×	×	×	×	Sun	×	✓	×	×	×